

Digi 002 and Digi 002 Rack Basics Guide

Version 6.7 for LE Systems on Windows XP and Mac OS X

Digidesign

2001 Junipero Serra Boulevard
Daly City, CA 94014-3886 USA
tel: 650-731-6300
fax: 650-731-6399

Technical Support (USA)

tel: 650-731-6100
fax: 650-731-6384

Product Information (USA)

tel: 650-731-6102
tel: 800-333-2137

International Offices

Visit the Digidesign Web site
for contact information

Web Site

www.digidesign.com



digidesign

Copyright

This guide is copyrighted ©2004 by Digidesign, a division of Avid Technology, Inc. (hereafter "Digidesign"), with all rights reserved. Under copyright laws, this guide may not be duplicated in whole or in part without the written consent of Digidesign.

DIGIDESIGN, AVID and PRO TOOLS are trademarks or registered trademarks of Digidesign and/or Avid Technology, Inc. All other trademarks are the property of their respective owners.

Product features, specifications, system requirements and availability are subject to change without notice.

PN 932013936-00 REV A 09/04

Introduction

Welcome to the *Digi 002 and Digi 002 Rack Basics Guide*. This guide is designed to give new users specific methods for accomplishing common tasks with the Digi 002 and Digi 002 Rack desktop audio interface and Pro Tools LE software.

Once you are familiar with basic Digi 002 and Digi 002 Rack operation, we recommend that you read the “Working With Pro Tools” tutorial in the *Getting Started with Digi 002 and Digi 002 Rack Guide*. For the most complete resource for using Pro Tools software, please refer to the *Pro Tools Reference Guide*.

Online Resources

Many resources for learning to use Pro Tools are also available online at the Digidesign Web site (www.digidesign.com), including the following:

DiSK (Digidesign Sound Knowledge) Instructional material about how to use Pro Tools, including DiSK Flix movies that show how to do a number of popular tasks using Pro Tools.

DigiZine A magazine for and about Pro Tools users, providing all the latest product news, user stories, and hundreds of tips and ideas.

Digi 002 and Digi 002 Rack Basics Requirements

Before proceeding, make sure you have:

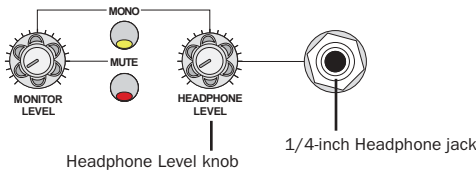
- Connected the Digi 002 or Digi 002 Rack to your computer with the FireWire cable
 - and –
- Installed Pro Tools LE software as described in the appropriate Windows or Macintosh installation chapter of the *Getting Started with Digi 002 and Digi 002 Rack Guide*.

Getting Sound In & Out of Digi 002 or Digi 002 Rack

To hear audio recorded into a Pro Tools session, you will need to connect headphones or an external sound system (such as powered monitors or a home stereo) to Digi 002 or Digi 002 Rack. Sound from Digi 002 and Digi 002 Rack cannot be played through your computer's speakers or your computer's sound output.

Connecting Headphones


There is one headphone jack, a stereo 1/4-inch plug, on the Digi 002 and Digi 002 Rack.



Headphone jack (located on the top panel of Digi 002, and on the front panel of Digi 002 Rack)

To connect headphones:


- Connect headphones with a 1/4-inch stereo connector (or adaptor) to the Headphone jack.

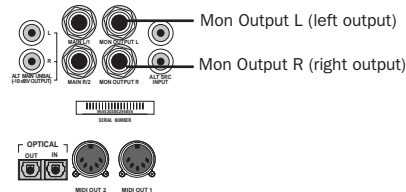
 The Headphone Level knob (located on the top panel of Digi 002, and on the front panel of Digi 002 Rack) adjusts the volume level of the Headphone jack.

Connecting a Sound System

The Monitor outputs (labeled “Mon”) on the back of the Digi 002 and Digi 002 Rack support 1/4-inch plugs. These connections can be balanced, TRS style connectors, or unbalanced. To listen to your Pro Tools session, these outputs can be connected to any amplification system: powered speakers, home stereo system, or an audio mixer.


When connecting to a stereo system, connect the left channel (often the white plug) to Mon Output L, and right channel (often the red plug) to Mon Output R. “Mon” is short for Monitor.

 Home stereo systems often use RCA connectors. You can use an adaptor or a special cable to convert from the TRS or TS connectors used by Digi 002 and Digi 002 Rack to the RCA connectors on your home stereo.



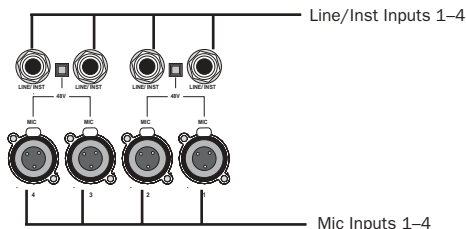
Monitor Outputs (back panel)

Mon Outputs L and R play the audio that is routed to analog outputs 1 and 2 within Pro Tools.

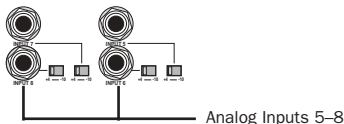
 The Monitor Level knob (located on the top panel of Digi 002, and on the front panel of Digi 002 Rack) adjusts the volume level of the Monitor Outputs.

Connecting Audio Inputs

Digi 002 and Digi 002 Rack inputs support microphones, guitars, keyboards, and other types of instruments.



Four Mic and Line/Inst Inputs (back panel)



Four Analog Inputs (back panel)

Digi 002 and Digi 002 Rack have eight analog inputs. One set of inputs is labeled Mic Inputs 1–4 and Line/Inst Inputs 1–4, and the other four are labeled Inputs 5–8. For stereo inputs, use an odd/even pair of inputs (for example, Input 5 for the left input, and Input 6 for the right input).

You cannot use both a Mic Input and Line/Inst Input with the same input number at the same time.

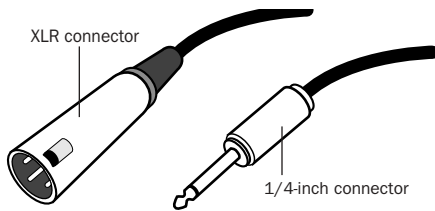
For information about connecting specific audio sources, see “Attaching a Microphone to the Digi 002 or Digi 002 Rack” on page 4, and “Connecting Instruments to the Digi 002 or Digi 002 Rack” on page 6.

Connecting a Microphone

There are several ways to use Digi 002 or Digi 002 Rack with a microphone, depending on the type of microphone and cables that you use.

Mic Cables

Some microphone cables use an XLR connector to attach a microphone to an input (such as those on the Digi 002 and Digi 002 Rack); other microphones use a 1/4-inch connector. If you have a choice, use an XLR connector to connect the microphone to the Digi 002 or Digi 002 Rack to yield better results.



XLR and 1/4-inch connectors

Phantom Power

Some microphones require power to operate. This power, called *phantom power*, is supplied either by a battery in the microphone, or through an audio interface (such as Digi 002 and Digi 002 Rack) that can supply power through the microphone cable.

Most *condenser* microphones (such as an AKG C3000) require phantom power to operate. *Dynamic* microphones (such as a Shure SM57) do not require phantom power to operate, but are not harmed by it.

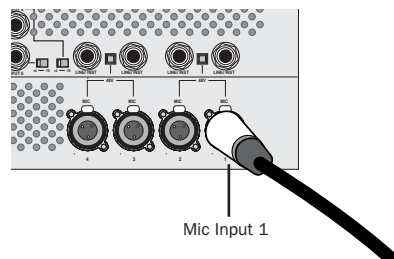
⚠ *Although phantom power can be used safely with most microphones, it is possible to damage some ribbon microphones with it. Always turn off phantom power and wait at least ten seconds before connecting a ribbon microphone.*

The Digi 002 and Digi 002 Rack can only supply power through a microphone cable with XLR connectors. If you are not sure about the phantom power requirements for your microphone, consult your microphone's documentation or contact the manufacturer.

Attaching a Microphone to the Digi 002 or Digi 002 Rack

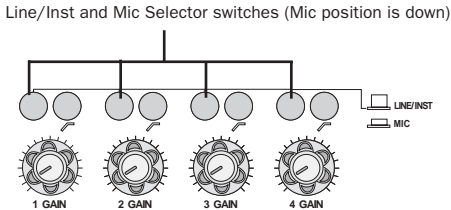
To use a microphone that has an XLR connector:

- 1 Plug your microphone cable into one of the Mic inputs on the back of Digi 002 or Digi 002 Rack. The inputs are numbered right to left, so Mic Input 1 is the rightmost input.



XLR connector plugged into Mic Input 1

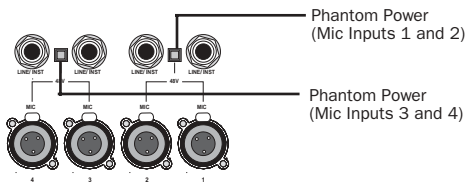
2 Press the Line/Inst and Mic Selector switch (located on the top panel of the Digi 002, and on the front panel of the Digi 002 Rack) for the corresponding input so that it is in the “Mic” (down) position.



Line/Inst and Mic Selector switches (located on the front panel of Digi 002, and top panel of Digi 002 Rack)

3 If your microphone requires phantom power, make sure the microphone is connected, then press the Phantom Power switch on the back of the Digi 002 or Digi 002 Rack (labeled 48V) for the corresponding input pair.

Each Phantom Power switch sends 48V to its corresponding input pair.

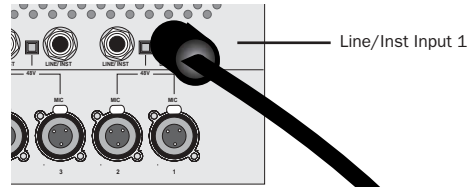


Phantom Power switches (back panel)

4 When Pro Tools is launched and the input is routed to a Pro Tools track (see “Recording a Pro Tools Session” on page 8), you can adjust the input level with the Gain knob on the top panel of the Digi 002, and the front panel of the Digi 002 Rack.

To use a microphone that has a 1/4-inch connector:

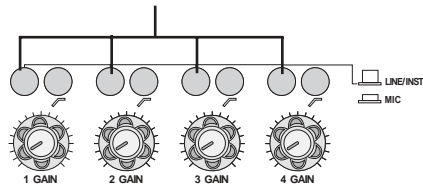
1 On the back of the Digi 002 or Digi 002 Rack, plug the 1/4-inch connector from your microphone into one of the Line/Inst inputs. The inputs are numbered right to left, so Line/Inst Input 1 is the rightmost input.



1/4-inch connector plugged into Line/Inst Input 1

2 Press the Line/Inst and Mic Selector switch (located on the top panel of the Digi 002, and on the front panel of the Digi 002 Rack) for the corresponding input so that it is in the “Line/Inst” (up) position.

Line/Inst and Mic Selector switches (Line/Inst position is up)



Line/Inst and Mic Selector switches (located on the front panel of Digi 002, and top panel of Digi 002 Rack)

⚠ If you are using a microphone with a 1/4-inch connector, do not choose the “Mic” input source because the Digi 002 or Digi 002 Rack will not register any signal.

3 When Pro Tools is launched and the input is routed to a Pro Tools track (see “Recording a Pro Tools Session” on page 8), you can adjust the input level with the Gain knob on the top panel of the Digi 002, and the front panel of the Digi 002 Rack.

Connecting Instruments

Connecting Instruments to the Digi 002 or Digi 002 Rack

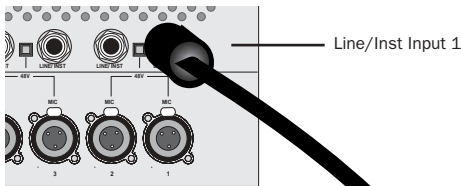
Digi 002 and Digi 002 Rack support two types of inputs, which correspond to the signal strengths output by different types of instruments. Instruments such as electric guitar or electric bass usually have a lower level of output than instruments and electronic audio sources such as mixers, samplers, keyboards, turntables, and synthesizers.

The higher level of output is commonly called “line-level” and the instruments that produce these higher levels are called line-level devices.

On the Digi 002 and Digi 002 Rack, Line/Inst Inputs 1–4 support low-level instruments *and* line-level instruments. Analog Inputs 5–8 support line-level instruments only.

To use a guitar with Digi 002 or Digi 002 Rack:

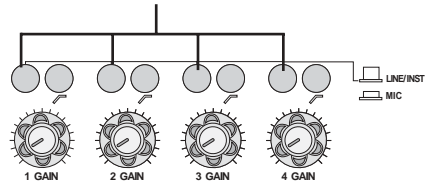
1 Plug your guitar cable into one of the Line/Inst inputs on the back of the Digi 002 or Digi 002 Rack. The inputs are numbered right to left, so Line/Inst Input 1 is the rightmost input.



Guitar cable plugged into Mic Input 1

2 Press the Line/Inst and Mic Selector switch (located on the top panel of the Digi 002, and on the front panel of the Digi 002 Rack) for the corresponding input so that it is in the “Line/Inst” (up) position.

Line/Inst and Mic Selector switches (Line/Inst position is up)



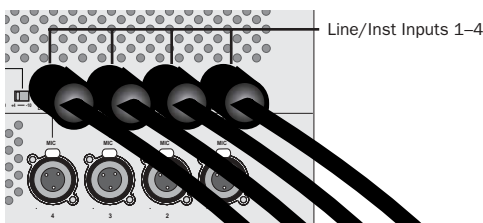
Line/Inst and Mic Selector switches (located on the front panel of Digi 002, and top panel of Digi 002 Rack)

3 When Pro Tools is launched and the input is routed to a Pro Tools track (see “Recording a Pro Tools Session” on page 8), you can adjust the input level with the Gain knob on the top panel of the Digi 002, and the front panel of the Digi 002 Rack.

To use a keyboard or mixer with Digi 002 or Digi 002 Rack:

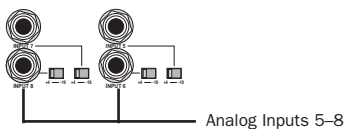
1 Plug your keyboard, mixer, or other audio source into any of the Line/Inst inputs or analog Inputs on the back of your Digi 002 or Digi 002 Rack. For stereo inputs, (such as a stereo keyboard or the stereo output from a mixer), use an odd/even pair of inputs. For example, connect the left channel (often the white plug) to Line/Inst 1, and right channel (often the red plug) to Line/Inst 2.

The Line/Inst inputs are numbered right to left, so Line/Inst Input 1 is the rightmost input.



Line/Inst Inputs (back panel)

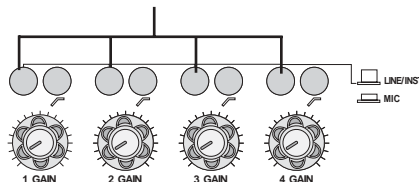
The analog Inputs are numbered top to bottom, in pairs.



Analog Inputs (back panel)

2 If you are using any Line/Inst inputs, press the Line/Inst and Mic Selector switch (located on the top panel of the Digi 002, and on the front panel of the Digi 002 Rack) for each corresponding input so that it is in the “Line/Inst” (up) position.

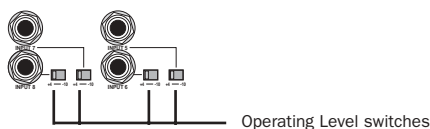
Line/Inst and Mic Selector switches (Line/Inst position is up)



Line/Inst and Mic Selector switches (located on the front panel of Digi 002, and top panel of Digi 002 Rack)

⚠ For line-level devices, the Gain knob should be turned down all the way.

3 If you are using any of the Inputs 5–8, set either a –10 dBV or +4 dBu operating level for the corresponding input using the Operating Level switch on the back panel. For information on the appropriate operating level for your input device, refer to the manufacturers’s specifications.



Line Inputs 5–8 (back panel)

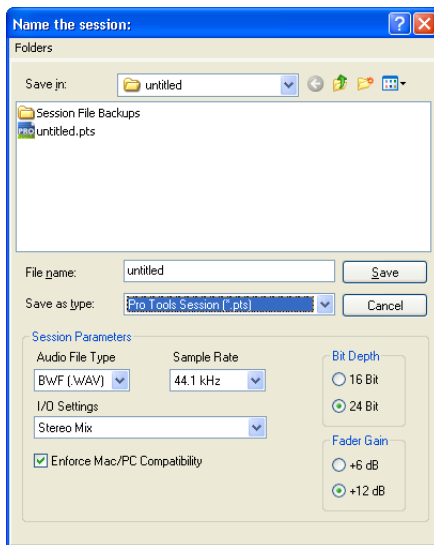
4 Set your instrument’s volume to its optimal level. For example, the optimal level for most keyboards is between 80% and 100% of maximum volume.

Recording a Pro Tools Session

Recording with Pro Tools and the Digi 002 or Digi 002 Rack involves creating a Pro Tools session, preparing an audio track for recording, and recording.

To create a session in Pro Tools:

- 1 Verify the connections between the Digi 002 or Digi 002 Rack and your instrument or microphone.
- 2 Launch Pro Tools.
- 3 Choose File > New Session.
- 4 Set Session Parameters in the New Session dialog as needed, or leave them at their default settings. (For details on New Session settings, see the *Getting Started with Digi 002 and Digi 002 Rack Guide*.)



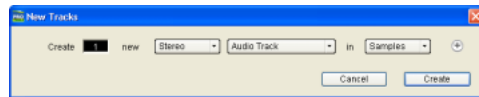
New Session dialog

- 5 Select where you want to save your session.
- 6 Type a name for your session.

- 7 Click Save. Pro Tools creates a new session.


To prepare an audio track for recording:

- 1 Choose File > New Track.
- 2 Specify 1 Mono Audio Track in Samples, if your source is mono, or 1 Stereo Audio Track in Samples, if your source is stereo.

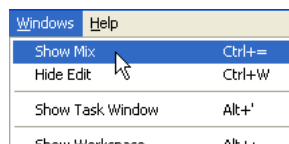


Creating a new stereo audio track

- 3 Click Create.

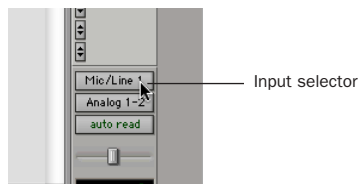
 A mono instrument uses one input on the Digi 002 or Digi 002 Rack, and a stereo instrument uses two. Creating a stereo track in Pro Tools will not make a mono instrument into a stereo instrument. If a mono instrument is recorded on a stereo track, one of the sides of the stereo track shows no signal.

- 4 Make certain the Mix window is open by choosing Windows > Show Mix.



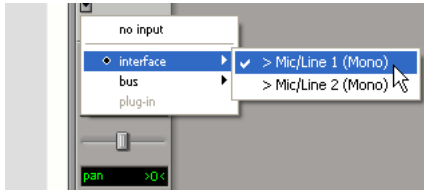
Showing the Mix window

- 5 In the Mix window, click the Input Selector on the new track.



Choosing an input in the Mix window

6 From the pop-up menu, select the interface input you want to record. For example, select Mic/Line 1 if your audio source is plugged into either the Mic Input 1 or Line/Inst Input 1 jack on the back of the Digi 002 or Digi 002 Rack



Routing an input to a mono track

7 Play the instrument or sound source at the volume you will record.

! *Clipping occurs when you feed a signal to an audio device that is louder than the circuitry can accept. To avoid clipping, adjust the Gain control to a level where the Peak LEDs (located on the top panel of Digi 002, and on the front panel of Digi 002 Rack) flicker occasionally.*

For line-level devices, the Gain knob should be turned down all the way.

8 If you need to lessen the amount of signal delay (latency) that you are hearing, set Pro Tools to Low Latency Monitoring mode. See “Controlling Delay (Latency) During Monitoring” on page 16 for specific steps.

To record an audio track:

1 Click the Record Enable button for the track.



Record enabling a track in the Mix window

2 Choose Windows > Show Transport to display the Transport window. Click Return To Zero to cue to the beginning of the session.



Transport window

3 Click Record in the Transport window to arm Pro Tools for recording. The Record button will flash red to indicate that Pro Tools is ready to record.

4 When you are ready to start recording, click Play or press the Spacebar.

5 Record your performance.

6 Click Stop in the Transport window or press the Spacebar when you are finished recording.

To play back a recorded track:

1 If the track’s Record Enable button is lit, click on it to take it out of Record mode.

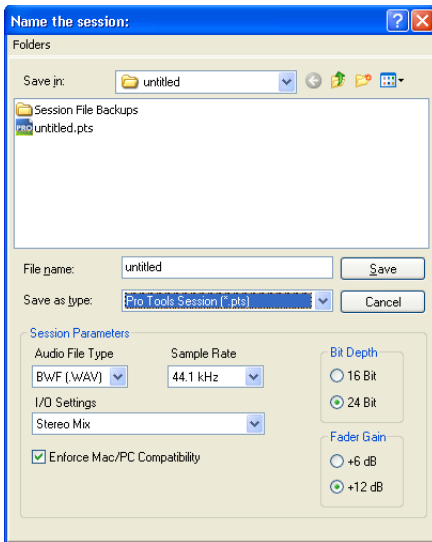
2 Click Play in the Transport window or press the Spacebar to start playback.

3 Click Stop in the Transport window or press the Spacebar to stop playback.

Importing Audio from a CD

To import audio from a compact disc:

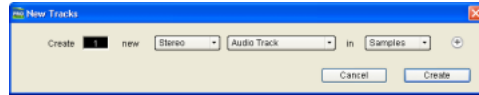
- 1 Put the source CD into your computer's CD drive.
- 2 Use a third party software program of your choice to extract audio from the CD.
- 3 Launch Pro Tools.
- 4 Choose File > New Session.
- 5 Set Session Parameters in the New Session dialog as needed, or leave at their default settings. (For details, see the *Getting Started with Digi 002 and Digi 002 Rack Guide*.)



New Session dialog

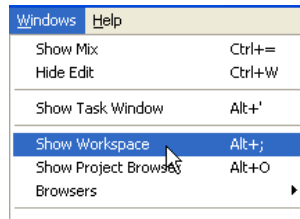
- 6 Select where you want to save your session.
- 7 Type a name for your session and click Save. Pro Tools creates a new session.

- 8 In the session, create a new track by choosing File > New Track.



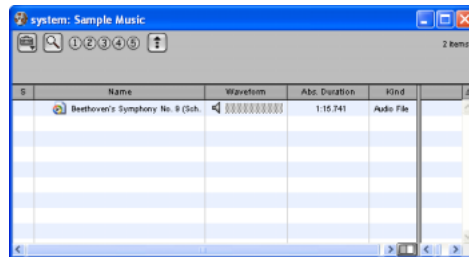
Creating a new stereo audio track

- 9 In the New Track dialog, specify 1 Stereo Audio Track in Samples, and click Create.
- 10 Open the Workspace Browser by choosing Windows > Show Workspace. The Workspace Browser is a window where you can find, audition, and manage your audio files.



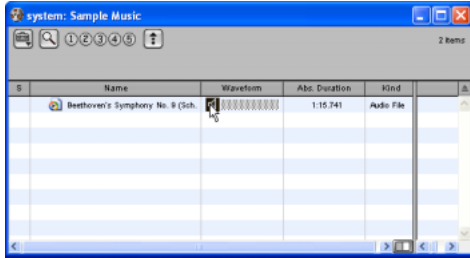
Opening the Workspace Browser

- 11 In the Workspace Browser, navigate to the location where you saved the audio you extracted from your CD in step 2.



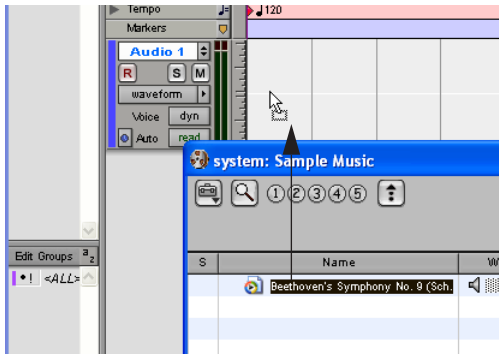
Browsing in the Workspace Browser

12 You can audition the audio file by clicking on the speaker icon in the waveform window.



Auditioning an audio file in the Workspace Browser

13 Drag the audio file from the Workspace Browser to the audio track you created in your session.



Dragging the audio file from the Workspace Browser to an audio track

To play back the new track:

- 1** In the Transport window, click Return To Zero to cue the beginning of the track.
- 2** Click Play in the Transport window or press the Spacebar to start playback.
- 3** Click Stop in the Transport window or press the Spacebar to stop playback.

Creating an Audio CD from a Pro Tools Session

Pro Tools does not create audio CDs directly, but you can create stereo audio files from your Pro Tools sessions that can be used by most common CD burning programs.

Use the Pro Tools Bounce to Disk feature to combine all your audible tracks into a single “master” audio file. After the new audio file has been bounced to disk, you can burn it to a CD.

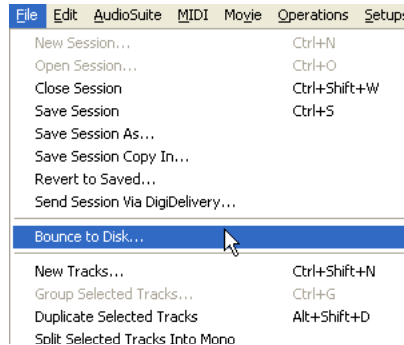
Bouncing Audio to Disk:

1 After you have finished recording and mixing a session in Pro Tools, highlight the length of the session in the timeline ruler (or on a track), plus an additional amount of time to avoid cutting off any reverb tails that might continue past the end of the region.



Audio session highlighted and ready to bounce

2 Choose File > Bounce to Disk.



Choosing Bounce to Disk from the file menu

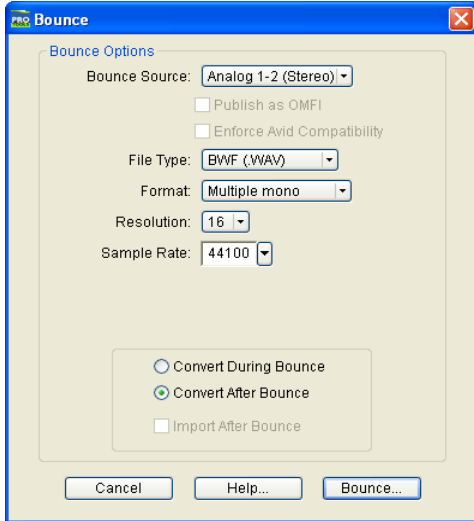
3 In the Bounce Options dialog, choose Analog Outputs 1–2 as the Bounce Source.

4 Choose BWF (.WAV) for the File Type.

5 Choose Stereo Interleaved for the Format.

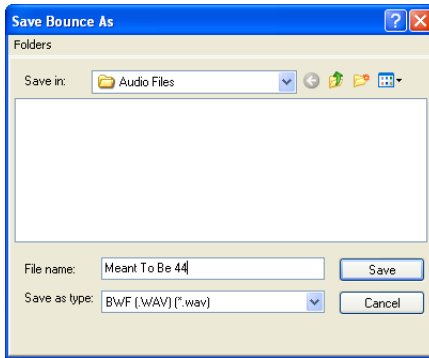
6 Choose 16 for the Resolution and 44100 for the Sample Rate.

7 Choose “Convert after Bounce,” and click Bounce.



Bounce options for creating CD burnable tracks

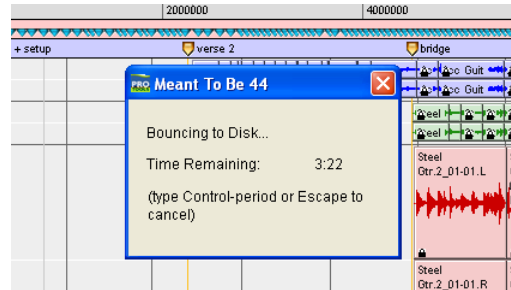
8 In the Bounce dialog, give the bounce tracks a name and choose where they should be saved.



Save Bounce Dialog

9 Click Save.


Pro Tools will begin bouncing to disk. Pro Tools bounces are done in real time, so you hear audio playback of your mix during the bounce process (though you cannot adjust it).



Bouncing to Disk dialog

Burning a CD

After the bounce is completed, you will have an audio file that is ready for burning onto a CD. Quit Pro Tools and launch any common third-party CD burning application to burn your bounced mix to CD.

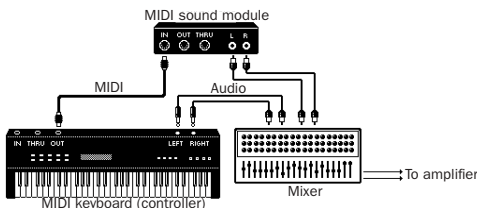
 *Make certain that you configure your CD burning application to create an audio CD rather than a data CD.*

Digi 002 and Digi 002 Rack and MIDI

What is MIDI?

MIDI (Musical Instrument Digital Interface) is not audio, and has no sound. MIDI is a way for musical devices to communicate. MIDI is data that can trigger a MIDI device (such as a keyboard or software synthesizer).

In order to create or play a MIDI recording, you must have a MIDI keyboard or sound module (real or virtual) connected to the computer through a MIDI interface. Audio from your MIDI instrument can be sent to an external mixer or monitored through the Digi 002 or Digi 002 Rack.



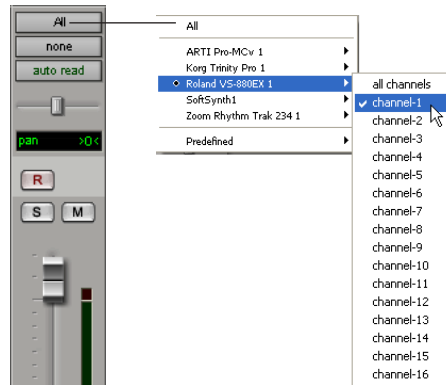
Signal paths for MIDI instruments

For more information on monitoring through the Digi 002 or Digi 002 Rack, see “Monitoring MIDI Instruments Without a Mixer” on page 15.

To configure a MIDI track for recording:

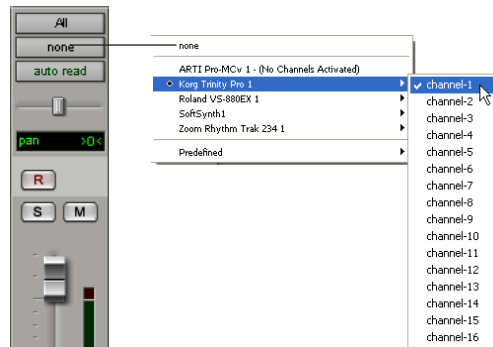
- 1 On Macintosh systems, choose MIDI > Input Devices and make sure your input device is selected in the MIDI Input Enable window.
- 2 Choose File > New Track and specify 1 MIDI Track, then click Create.

- 3 In the Mix window, click the track’s MIDI Input Selector and assign the device and channel that will be recorded.



MIDI Input Selector

- 4 In the Mix window, click on the track’s MIDI Output Selector and choose the destination (assignment) for that MIDI track by choosing a MIDI interface port, a channel, or a device from the pop-up menu (choices vary depending on the operating system and Pro Tools version).



MIDI Output Selector

5 In the Mix Window, record-enable the MIDI track.

6 Make sure MIDI > MIDI Thru is selected, then play some notes on your MIDI controller. The track's meters move. Remember, MIDI is not audio, and the meters are not registering sound, but MIDI activity.



To monitor your MIDI instrument's analog outputs in Pro Tools, refer to "Monitoring MIDI Instruments Without a Mixer" on page 15.

You can also monitor your MIDI instrument's analog outputs by using an external mixer.

To record a MIDI track:

- 1** Verify that the MIDI track you want to record to is record-enabled and receiving MIDI.
- 2** In the Transport window, click Return To Zero to start recording from the beginning of the session. You can also record according to a selection or from the cursor location in the Edit window.
- 3** Click Record in the Transport window.
- 4** Click Play in the Transport window or press the Spacebar to begin recording.
- 5** Play your MIDI instrument.
- 6** When you have finished recording, click Stop in the Transport window, or press the Spacebar. The newly recorded MIDI data appears as a MIDI region on the track in the Edit window, as well as in the MIDI Regions List.

To play back a recorded MIDI track:

- 1** Click the Record Enable button to take the MIDI track out of Record mode.
- 2** In the Transport window, click Return To Zero to play back from the beginning of the track.
- 3** Click Play in the Transport window to begin playback. The recorded MIDI data plays back through the track's assigned instrument and channel.

Monitoring MIDI Instruments Without a Mixer

To monitor your MIDI instrument's analog output in Pro Tools, you can use an Auxiliary Input. Auxiliary Inputs function as inputs for both internally bussed signals and external audio sources.

To configure an Auxiliary Input for MIDI monitoring:

- 1** Connect the MIDI instrument's audio output to the appropriate inputs on your Digi 002 or Digi 002 Rack.
- 2** Choose File > New Track and specify 1 mono or stereo Auxiliary Input, then click Create.
- 3** Click the Input selector of the Auxiliary Input channel and choose the input to which your MIDI instrument is connected to the Digi 002 or Digi 002 Rack.
- 4** Adjust the level of the Auxiliary Input with its volume fader. Now you will hear the audio output of your MIDI device in Pro Tools.

Controlling Delay (Latency) During Monitoring

Pro Tools LE with Digi 002 or Digi 002 Rack use your computer for all audio processing, playback, and recording. This causes a small amount of audio delay, or latency.

Latency is most obvious when monitoring during recording. You may hear this as a slight delay between when you produce the sound and when you hear the sound through the speakers or headphones.

Pro Tools LE for Digi 002 and Digi 002 Rack systems includes a feature called Low Latency Monitoring. This feature allows you to use a built-in mixer in the Digi 002 unit or Digi 002 Rack unit when recording or monitoring to lessen the effect of latency.

To use Low Latency Monitoring, tracks must be record-enabled, assigned to an actual audio input (not a bus), and assigned to outputs 1 or 2.

To use Low Latency Monitoring while recording:

- 1** Launch Pro Tools and set up a session. See “Recording a Pro Tools Session” on page 8.
- 2** Select Operations > Low Latency Monitoring.

When Low Latency Monitoring is enabled, any plug-ins and sends assigned to record-enabled tracks (routed to Outputs 1–2) are automatically bypassed, and must remain bypassed. Also, these tracks will not register on meters for Master Faders.