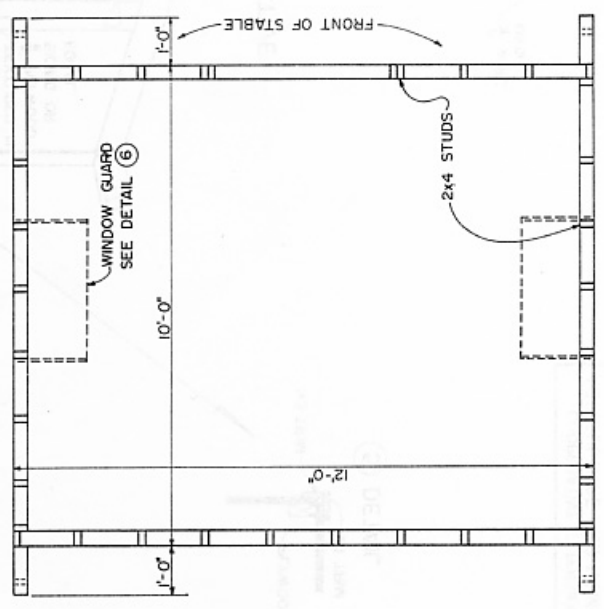


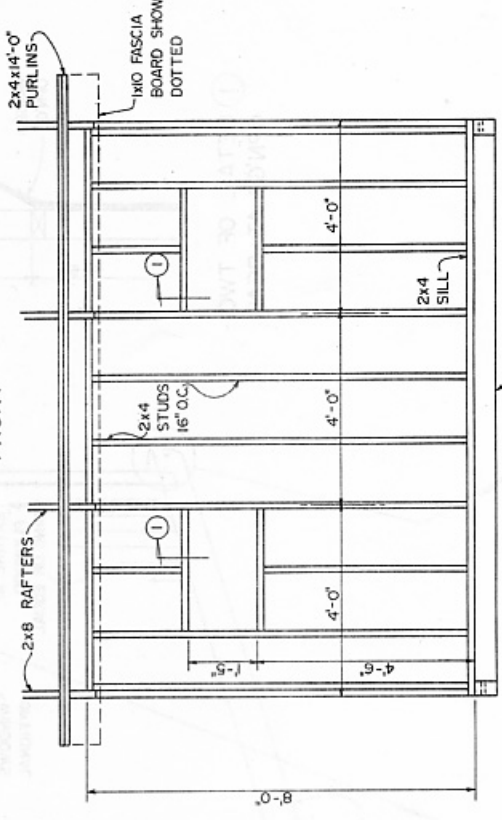
**MATERIAL LIST**

- 6'-ALUM OR GALV STEEL ROOFING SHEETS (26"x144")
- 1-TRANSLUCENT ROOF SHEET
- LUMBER**
  - 7-2x4x14'-0"
  - 4-2x4x12'-0"
  - 12-2x4x10'-0"
  - 36-2x4x8'-0"
  - 4-2x8x12'-0"
  - 2-4x6x12'-0" PT.
  - 2-4x6x12'-0"
  - 2-1x10x14'-0"
  - 2-1x10x12'-0"
  - 5-1x3x10'-0"
  - 8-1x4x10'-0"
  - 3-3/4x4x8'-0"
- MISCELLANEOUS**
  - 8-COMMERCIAL CONNECTORS
  - 1-DOOR (MATT'L AS REQ'D)
  - 4-HEAVY DUTY T-HINGES
  - 4-3" HINGES FOR REAR OPNG'S
  - 2-LATCHES FOR REAR OPNG'S
  - 2-16"x32" 3 LITE WINDOWS OPT'L
  - NAILS, LAG SCREWS, ETC. AS REQ'D

**SIDES**



**FRONT**



**REAR**

**FRAMING DETAILS**

**PLAN**