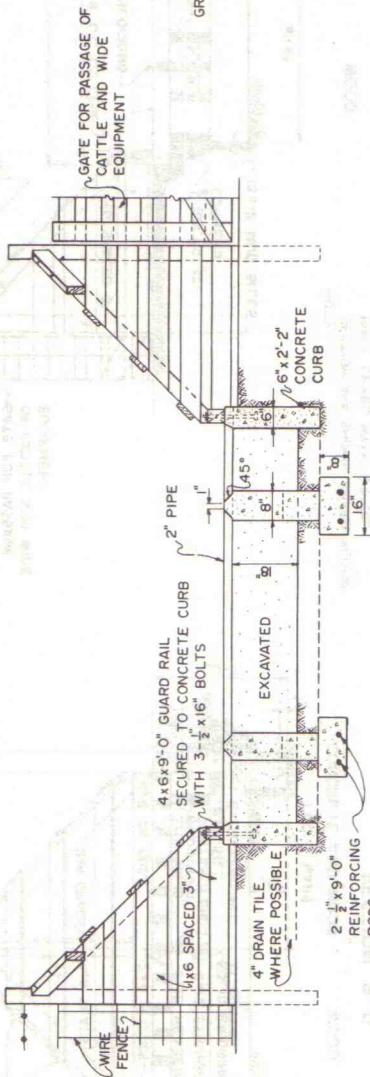


SECTION A-A

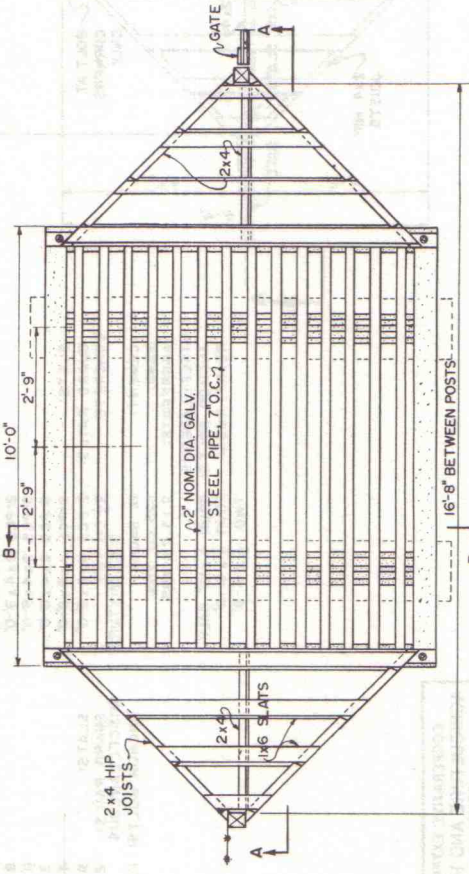


SECTION B-B

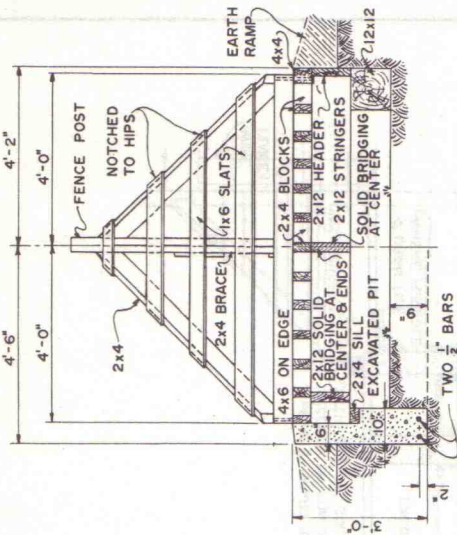
BILL OF MATERIALS
CONCRETE AND STEEL

- LUMBER:**
 1-PCS 2x4x12'-0"
 2- " 2x4x14'-0"
 6- " 1x6x12'-0"
 GUARD RAILS: 2- " 4x6x9'-0"
CONCRETE: 2 3/4 CU YDS. (1:3:5 MIXTURE)
 13 SACKS CEMENT
 1.4 CU YDS. SAND
AGGREGATE: 2.35 CU YDS.
MISCELLANEOUS PIPES:
 14-PCS, 2" NOM. DIA. EXTRA STRONG GALV STEEL PIPE OR RAILS 10'-0" LONG
ANCHOR BOLTS: 6- 3/4 x 16"
REINF. RODS: 4- 1/2 x 9'-0"

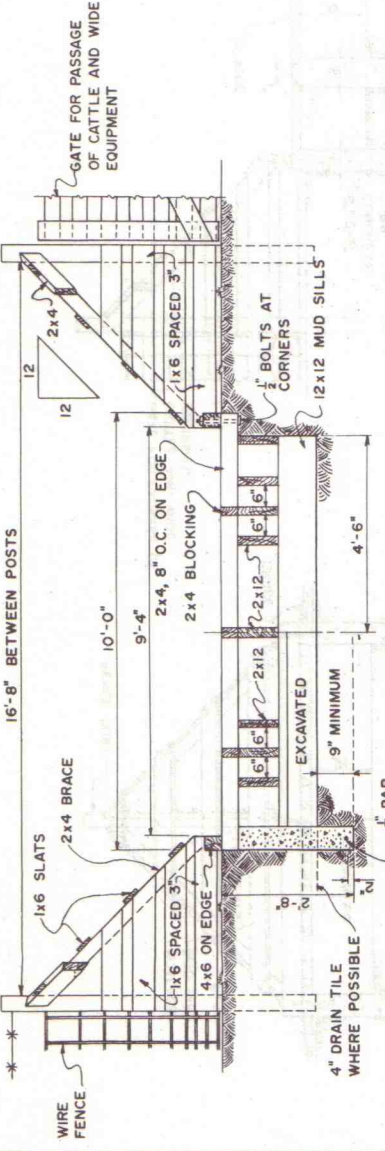
NOTE: A WIDE GATE ADJACENT TO GUARD IS SUGGESTED FOR PASSAGE OF EXTRA WIDE EQUIPMENT AND LIVESTOCK. ALL WOOD TO BE TREATED WITH PRESERVATIVE.



PLAN



SECTION B-B
CONCRETE AND WOOD WOOD



SECTION A-A
CONCRETE AND WOOD WOOD

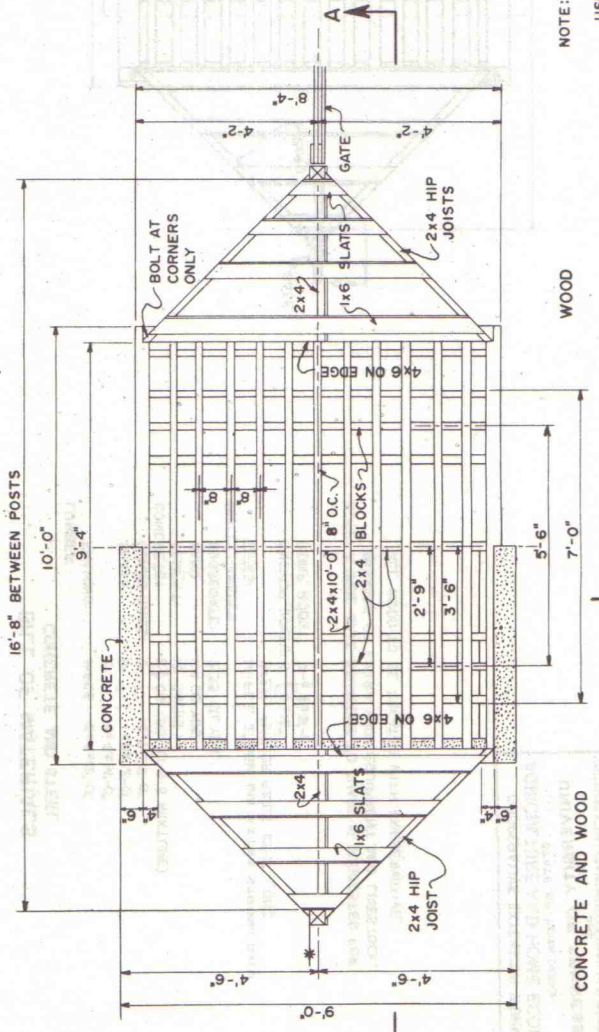
BILLS OF MATERIAL

CONCRETE AND WOOD

- LUMBER
FENCE POSTS: 2-PCS 4x4x7'-0"
FRAMING: 3-PCS 2x12x10'-0"
7-PCS 2x12x8'-0"
13-PCS 2x4x10'-0"
2-PCS 2x4x9'-0"
3-PCS 2x4x8'-0"
6-PCS 2x4x6'-0"
9-PCS 1x6x8'-0"
2-PCS 4x6x8'-0"
2 1/2 CU. YDS. (1:3:5 MIXTURE)
- CEMENT: 12 SACKS
SAND: 1.25 CU. YDS.
AGGREGATE: 2.13 CU. YDS.
- MISCELLANEOUS
ANCHOR BOLTS: FOUR 1/2"x12" GALV.
REINF. RODS: FOUR 1/2"x8'-9"

WOOD

- LUMBER
FENCE POSTS: 2-PCS 4x4x7'-0"
FRAMING: 2-PCS 12x12x9'-0"
2-PCS 4x4x10'-0"
3-PCS 2x12x10'-0"
9-PCS 2x12x8'-0"
11-PCS 2x4x10'-0"
3-PCS 2x4x8'-0"
6-PCS 2x4x6'-0"
9-PCS 1x6x8'-0"
2-PCS 4x6x8'-0"
- GUARD RAILS: 2-PCS 1x6x8'-0"
MISCELLANEOUS: 2-PCS 4x6x8'-0"
ANCHOR BOLTS: FOUR 1/2"x12" GALV.



PLAN

CONCRETE AND WOOD

WOOD

NOTE:

USE ROUGH-SAWN LUMBER.
ALL WOOD IS TO BE PRESSURE-TREATED
WITH PRESERVATIVE.